

FOR REPRESENTATION  
*Indicative of finish quality*

COMPANY PROFILE • EDITION 2026



**SN INTERIORS**  
CRAFTED SPACES

# Crafting spaces with **Trust, Quality & Precision.**

A premium interior contracting practice executing high-end residential and commercial fit-outs across Mumbai — built on Indian Standard Codes, delivered with on-site supervision, finished with care.

**FOUNDED**  
Mumbai, India

**SPECIALISATION**  
Premium Interiors

**TRADES**  
Ten core disciplines

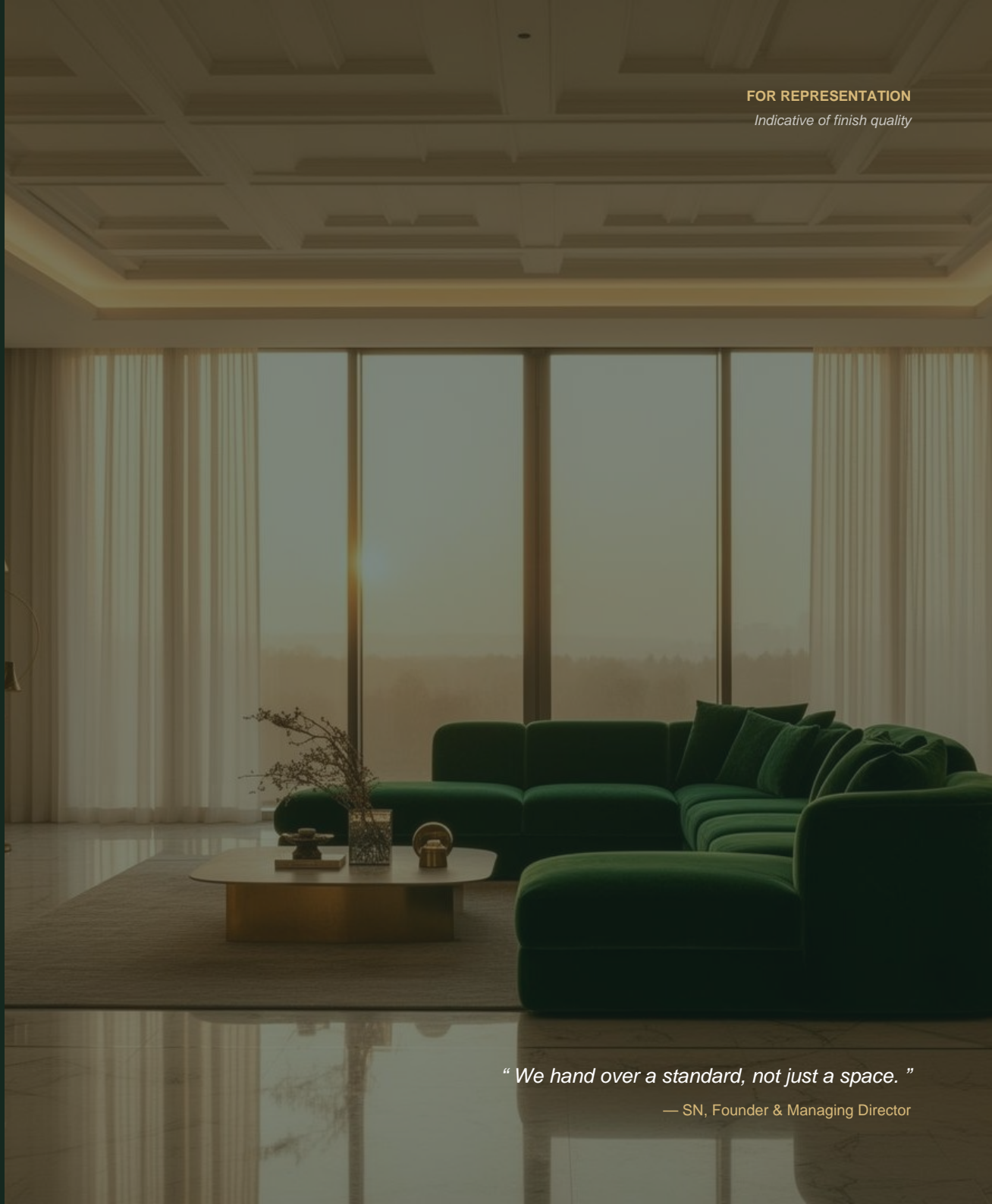
**STANDARDS**  
IS-Code Compliant

**CLIENTS**  
60+ trusted firms

**EXECUTED**  
1.4M+ sq.ft

[s.n.interiors123@gmail.com](mailto:s.n.interiors123@gmail.com) • +91 90226 90786

Kurla East, Mumbai 400070 • [www.sn-interiors.in](http://www.sn-interiors.in)



*“ We hand over a standard, not just a space. ”*

— SN, Founder & Managing Director

01 • WHO WE ARE

# A practice built on craft.

SN Interiors is a Mumbai-based premium interior contracting firm. We do not chase volume — we choose the projects we believe we can deliver to the highest standard, and then we deliver them with the same discipline a master craftsman brings to a single piece of work.

From the first site visit to the final hand-over walkthrough, every line, every joint and every coat is supervised by people who care more about how it looks ten years from now than how fast it can be billed today.



COMPLETED PROJECT • EXECUTIVE LOUNGE, MUMBAI

## 01

### VISION

To be the most trusted interior contracting partner for premium projects in India.

## 02

### MISSION

Execute every project to IS-code standards, on schedule, with transparent communication and zero surprises.

## 03

### VALUES

Trust above all. Quality without compromise. Precision in every detail. Respect for the client's time, space and money.

FROM THE FOUNDER

# A practice led from the site, not the studio.



SN • FOUNDER & MANAGING DIRECTOR

*"Interiors are not finished on a drawing — they are finished on site, at the joint, the corner, the millimetre. Every project we take on rests on three commitments: skilled in-house craftsmen, supervised execution, and IS-code compliance from primer to polish. We do not simply hand over a space — we hand over a standard."*

## OUR FOUR COMMITMENTS

### 01 Hands-on Supervision

Founder-led site reviews on every project.

### 02 In-house Workforce

Skilled trades on payroll — never sub-contracted.

### 03 Material Traceability

Approved-make registers and stage-wise audits.

### 04 Written Commitments

Timelines and standards on paper, not promises.

## BACKGROUND

Over a decade of hands-on contracting across premium residential, hospitality and commercial fit-outs in Mumbai. Trained as a site engineer, with a working knowledge of every trade we execute — from putty consistency to wardrobe joinery to epoxy industrial floors.

02 • WHY CLIENTS CHOOSE US

# What you get with SN.

## 01 Single Point of Accountability

One supervisor owns your project end-to-end. No finger-pointing between trades.

## 02 In-house Six-Trade Team

Painting, POP, false ceiling, carpentry, civil and flooring — all under one roof, one schedule.

## 03 IS-Code Compliant Execution

Every layer — from primer to finish coat — follows Indian Standard codes. We document it.

## 04 Transparent Pricing

Item-rate BOQs. No hidden charges. What we quote is what you pay — in writing, before we start.

## 05 Disciplined Site Management

Daily progress logs, weekly client updates, clean sites, safety gear, and respect for neighbours.

## 06 Hand-over the Right Way

Final walkthrough, snag-list closure and a clean site. We leave the way we'd want a contractor to leave.

**100%**

SITE SUPERVISION

**06**

CORE TRADES

**IS-Code**

COMPLIANT

**60+**

TRUSTED CLIENTS

03 • SERVICES PORTFOLIO

# Ten trades. One team.

<p><b>01 PAINTING &amp; FINISHES</b></p> <p>Putty, primer, premium emulsions</p> <p>IS 2932 / 5411</p>	<p><b>02 POP &amp; PLASTER</b></p> <p>Internal plaster, POP punning, cornices</p> <p>IS 2547</p>	<p><b>03 FALSE CEILING</b></p> <p>Gypsum, calcium silicate, grid</p> <p>IS 2095</p>	<p><b>04 TEXTURE FINISHES</b></p> <p>Italian stucco, Venetian, lime-wash</p> <p>Imported</p>	<p><b>05 WALL PANELLING</b></p> <p>Wallpapers, WPC fluted, veneer</p> <p>Acoustic</p>
<p><b>06 CARPENTRY &amp; JOINERY</b></p> <p>Wardrobes, kitchens, doors</p> <p>Premium HW</p>	<p><b>07 MODULAR JOINERY</b></p> <p>Hettich / Hafele / Blum</p> <p>Factory</p>	<p><b>08 CIVIL &amp; MASONRY</b></p> <p>Brickwork, dry-walls, waterproofing</p> <p>IS 1077/456</p>	<p><b>09 FLOORING</b></p> <p>Marble, granite, vitrified, wooden</p> <p>Laser-level</p>	<p><b>10 STONE &amp; EPOXY</b></p> <p>Diamond polish, PU &amp; epoxy</p> <p>Industrial</p>

## BRANDS & MAKES WE WORK WITH

**PAINTS**

Asian Paints • Berger • Dulux • Nippon • Jotun

**SANITARY**

Kohler • Jaquar • Toto • Hindware • Grohe

**PLY/BOARDS**

Century • Greenply • Action Tesa • Merino

**ADHESIVES**

Fevicol • Pidilite • Dr Fixit • Sika

**HARDWARE**

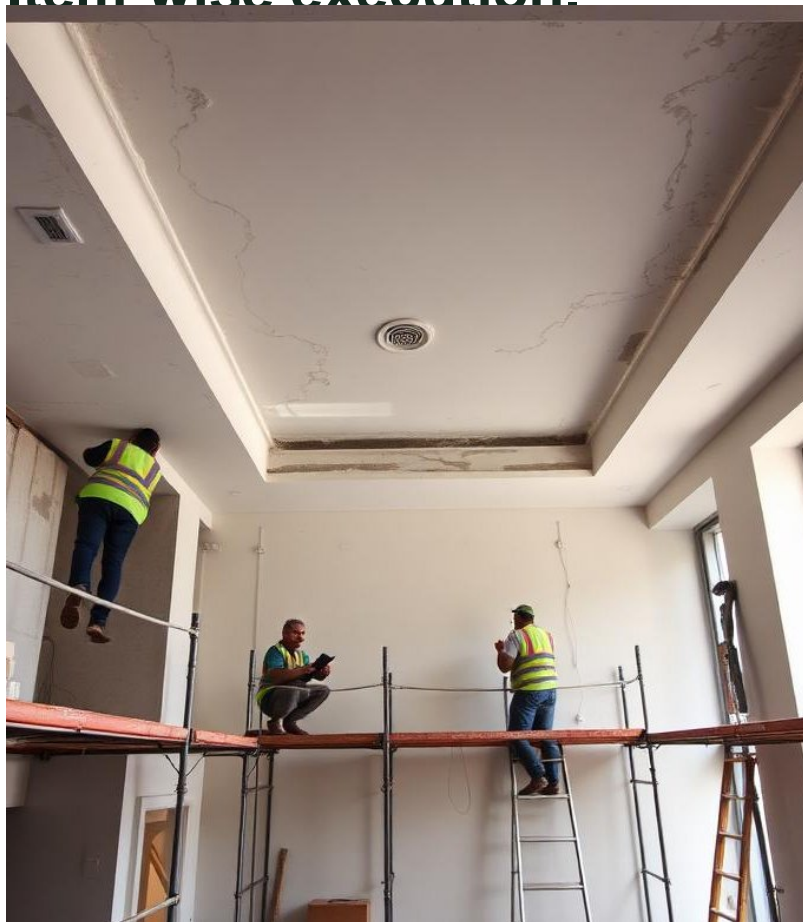
Hettich • Hafele • Blum • Ebco • Dorma

**LIGHTING**

Wipro • Philips • Halonix • Crompton

04 • METHODOLOGY — PAINTING

# Item-wise execution.



## 01 Surface Preparation

Substrate inspection, removal of loose paint, hairline crack treatment with acrylic putty (IS 428). Sanded to 220 grit and dust-free wipe-down.

## 02 Primer Application

Single coat of alkali-resistant water-based primer (IS 5411) at recommended DFT. Drying time strictly observed before recoat.

## 03 Putty / Levelling

Two coats of premium acrylic wall putty applied with steel float, 4–6 hour interval, sanded between coats for a glass-smooth finish.

## 04 Finish Coats

Two to three coats of premium emulsion (Asian / Berger / Dulux) applied by roller or spray, IS 15489 compliant, humidity controlled.

## 05 QA & Touch-up

Site lead inspects under daylight + warm light. Touch-ups closed before sign-off. Site cleaned, walkthrough conducted with client.

### ACCEPTANCE CRITERIA • PAINTING

#### Coverage

Even sheen under raking light; no roller marks or lap joints.

#### Adhesion

Cross-hatch tape test — zero peel after 7 days of cure.

#### Edges

Crisp 90° cut at corners; no bleed onto skirting or trims.

#### Documentation

Brand, batch, shade & DFT logged per room in QA register.

04 • METHODOLOGY — FALSE CEILING

# Item-wise execution.



## 01 Survey & Layout Marking

Laser-level marking of grid lines on wall and ceiling. Service routing (HVAC, conduits, sprinklers) verified before installation.

## 02 Framework Installation

GI perimeter channel + intermediate channel + ceiling section installed at IS 2095 spacing. All fasteners corrosion-resistant.

## 03 Board Fixing

12.5 mm gypsum / calcium silicate boards screwed at 230 mm centres. Joint stagger maintained to avoid linear cracks.

## 04 Jointing & Finishing

Joint tape + three-coat compound application. Sanded smooth, primed and ready for paint or finish layer.

## 05 Lighting & Hand-over

Light fixtures cut and seated. Cove lighting tested. Hand-over only after live run + thermal check.

### CEILING SYSTEMS WE EXECUTE

#### Gypsum Plain

12.5 mm Saint-Gobain / India  
Gypsum on GI framework.

#### Grid / Tile

600x600 mineral fibre tile in  
T-grid for offices.

#### Calcium Silicate

Wet-area: bathrooms, kitchens —  
moisture & sag resistant.

#### Acoustic

Perforated gypsum or wood-wool —  
boardrooms & theatres.

05 • STANDARDS & COMPLIANCE

# Built on the codes.

Every trade we execute references the relevant Indian Standard Code. Materials are sourced from approved brands; workmanship is checked against documented tolerances; sites are inspected daily by a senior supervisor.

<p><b>IS 2932</b> <b>COMPLIANT</b> Enamel &amp; synthetic paints — interior &amp; exterior.</p>	<p><b>IS 5411</b> <b>COMPLIANT</b> Plastic emulsion paints, exterior, general purpose.</p>	<p><b>IS 15489</b> <b>COMPLIANT</b> Plastic emulsion paint — interior, premium grade.</p>	<p><b>IS 2547</b> <b>COMPLIANT</b> Gypsum plaster boards — POP wall plaster compliance.</p>
<p><b>IS 2095</b> <b>COMPLIANT</b> Gypsum plaster boards — false ceiling installation.</p>	<p><b>IS 1077</b> <b>COMPLIANT</b> Common burnt clay building bricks — masonry.</p>	<p><b>IS 456</b> <b>COMPLIANT</b> Code of practice for plain &amp; reinforced concrete.</p>	<p><b>IS 1200</b> <b>COMPLIANT</b> Method of measurement of building &amp; civil works.</p>
<p><b>IS 1786</b> <b>COMPLIANT</b> High-strength deformed steel bars for RCC.</p>	<p><b>IS 13920</b> <b>COMPLIANT</b> Ductile detailing of RC structures — seismic.</p>	<p><b>IS 800</b> <b>COMPLIANT</b> Steel structures — design &amp; fabrication.</p>	<p><b>IS 875</b> <b>COMPLIANT</b> Code of practice for design loads (non-seismic).</p>

**Documented. Audited. Inspected.**

*We can produce code references and material brand lists for any project on request.*

06 • **QUALITY POLICY**

# Quality is not inspected in. It is built in.

## OUR POLICY STATEMENT

SN Interiors is committed to delivering interior fit-out work that meets — and where possible exceeds — the relevant Indian Standard Codes, the agreed scope, and the client's written expectations. We achieve this through approved materials, trained applicators, daily senior supervision, documented stage sign-offs, and an open snag-list culture that closes every defect before hand-over.

### 01 APPROVED MATERIALS

Only the brands and grades named in the BOQ are used. Substitutions need written client approval.

### 02 TRAINED APPLICATORS

Each trade is executed by teams trained on the specific product system and method.

### 03 STAGE-WISE SIGN-OFFS

Putty, primer, finish — every stage is jointly checked and signed off before the next begins.

### 04 DAILY SENIOR SUPERVISION

A senior supervisor is on-site every working day to verify alignment, dilution and finish quality.

### 05 DOCUMENTED QA RECORDS

Daily progress photos, dilution logs and material batch records are maintained per project.

### 06 SNAG-LIST DISCIPLINE

A formal snag-list is opened at hand-over and closed within an agreed window.

*Reviewed annually by senior management. Quality records available on request.*

07 • SAFETY POLICY

# A safe site is a well-built site.

## OUR POLICY STATEMENT

SN Interiors is committed to providing a safe, clean and respectful working environment for our crew, our clients and the neighbours of every site we operate on. We achieve this through mandatory PPE, daily toolbox talks, controlled material storage, and senior supervision during all active work.

- **PPE Compliance**  
Helmets, gloves, safety shoes and harnesses.
- **Clean Site Protocol**  
Floor protection, dust containment, daily debris removal.
- **Material Storage**  
Paints, solvents, sharp tools in lockable kits.
- **Daily Toolbox Talks**  
Five-minute morning briefing on hazards.
- **Authorised Personnel**  
Verified workforce only. Visitor log at site entry.
- **Senior Supervisor On-site**  
Always present during active work.



### SITE EMERGENCY & ESCALATION

**FIRST-AID KIT**

Stocked at every site entrance.

**FIRE EXTINGUISHER**

ABC type — mandatory in hot-work zones.

**EMERGENCY NUMBERS**

Fire, ambulance & PM at entry.

**POWER LOCKOUT**

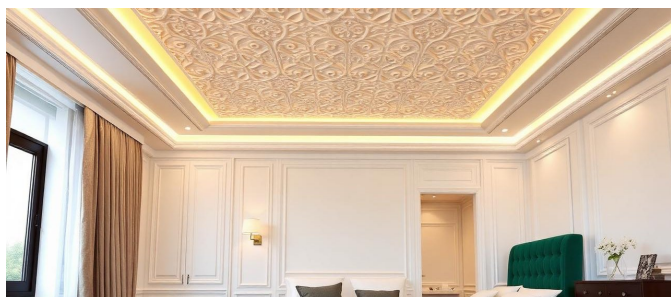
Mains breakers tagged during electrical work.

*“A clean, supervised site is the first sign of a project that will finish well.”*

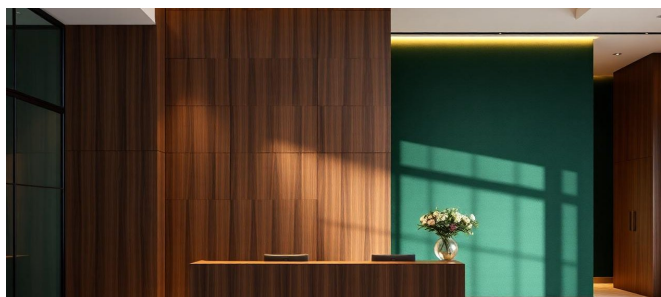
08 • FEATURED PROJECTS

# Selected work.

A selection from our recent residential and commercial portfolio. Photos shown are for representation — actual deliverables, finishes and scope are tailored to each client's brief.



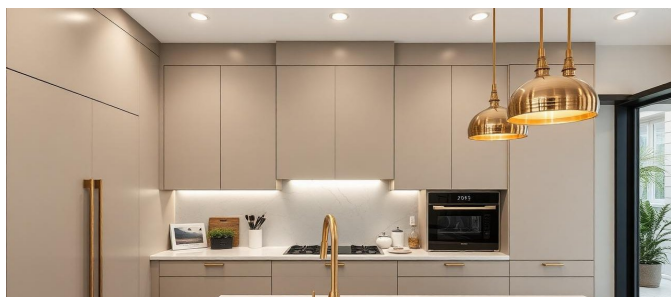
**RESIDENTIAL • LIVING HALL**  
Bandra West • 4,200 sq.ft • 18 weeks



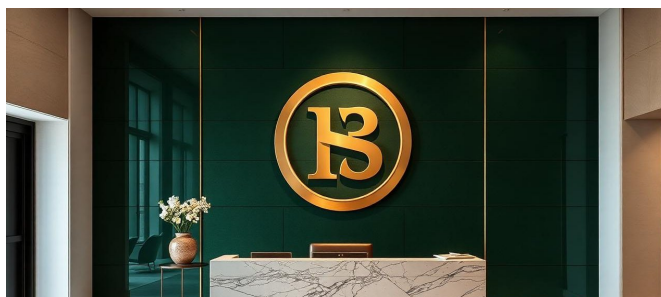
**COMMERCIAL • HOTEL LOBBY**  
Andheri • 2,800 sq.ft • 12 weeks



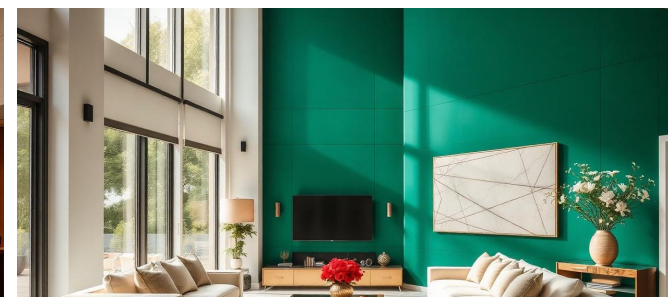
**RESIDENTIAL • MASTER BEDROOM**  
Worli • 640 sq.ft • 6 weeks



**RESIDENTIAL • MODULAR KITCHEN**  
Powai • 320 sq.ft • 4 weeks



**COMMERCIAL • OFFICE FIT-OUT**  
BKC • 1,800 sq.ft • 3 weeks



**RESIDENTIAL • FAMILY LOUNGE**  
Juhu • 1,200 sq.ft • 9 weeks

**RESIDENTIAL**  
78 • Apts & villas

**HOSPITALITY**  
14 • Hotels & F&B

**COMMERCIAL**  
22 • Offices & shops

**RENOVATION**  
18 • Fit-out & restore

09 • BEHIND THE FINISH

# Inside an active site.

What clients see is the finished room. What we obsess over is everything that happens before — the prep, the alignment, the layer-by-layer build that decides how a space ages. These shots capture that work.



**PUTTY & PRIMER STAGE**  
WORK IN PROGRESS



**FALSE CEILING FRAMEWORK**  
WORK IN PROGRESS



**CARPENTRY INSTALL**  
WORK IN PROGRESS



**MARBLE FLOORING**  
WORK IN PROGRESS



**DAILY SITE BRIEFING**  
WORK IN PROGRESS



**FINISHING DETAIL**  
WORK IN PROGRESS

**A TYPICAL DAY ON A SN SITE**

**08:30**  
Toolbox talk

**09:00**  
Stage work begins

**11:30**  
Supervisor walk

**13:30**  
Lunch + rotation

**16:30**  
Material recon

**18:00**  
Cleanup + report

**10 • TRUSTED BY**

# Partners who choose us, again.

A growing list of hotels, builders, design studios and contracting firms who trust SN Interiors to execute their most important interior fit-out work. We are grateful to each of them.

**01 Hotel Godwin**

TRUSTED CLIENT • ACTIVE PARTNERSHIP

**02 Adroit**

TRUSTED CLIENT • ACTIVE PARTNERSHIP

**03 Bhawar Interiors**

TRUSTED CLIENT • ACTIVE PARTNERSHIP

**04 Beacon Associates**

TRUSTED CLIENT • ACTIVE PARTNERSHIP

**05 Royal Sojourn**

TRUSTED CLIENT • ACTIVE PARTNERSHIP

**06 Setu Constructions**

TRUSTED CLIENT • ACTIVE PARTNERSHIP

**07 Hotel Parklane**

TRUSTED CLIENT • ACTIVE PARTNERSHIP

**08 Mani Care System**

TRUSTED CLIENT • ACTIVE PARTNERSHIP

**09 Citadel Interiors**

TRUSTED CLIENT • ACTIVE PARTNERSHIP

**10 Archimedium Projects**

TRUSTED CLIENT • ACTIVE PARTNERSHIP

**11 Avantika Builders**

TRUSTED CLIENT • ACTIVE PARTNERSHIP

**12 Lumen Studio**

TRUSTED CLIENT • ACTIVE PARTNERSHIP

**WHAT THEY SAY**

*"They run the site the way I would run my own home — clean, supervised and finished on time."*

— Director, Hospitality Group, Mumbai

*"The discipline of stage sign-offs and a daily photo log was new for us. We now expect it from every contractor."*

— Principal Architect, Design Studio

11 • WORK EXECUTED

# Numbers that speak before we do.

A decade of disciplined execution — measured in square feet, running metres and units delivered across residences, hotels and commercial spaces. Cumulative figures since 2014; verified records available on request.

<p><b>120+</b> PROJECTS</p>	<p><b>10+</b> YEARS</p>	<p><b>1.4M</b> SQ.FT EXECUTED</p>	<p><b>60+</b> CLIENTS</p>
---------------------------------	-----------------------------	---------------------------------------	-------------------------------

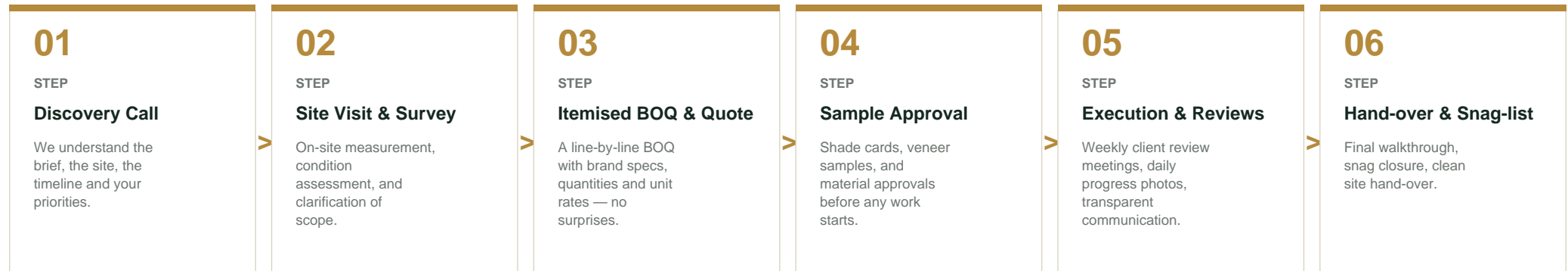
## ITEM-WISE EXECUTION RECORD

ITEM	QUANTITY	UNIT	ITEM	QUANTITY	UNIT
Painting Works (Interior & Exterior)	12,40,000	Sq.ft	Carpentry & Site Joinery	2,80,000	Sq.ft
POP & Gypsum Punning	3,80,000	Sq.ft	Stone Polishing & Restoration	1,90,000	Sq.ft
False Ceiling (Gypsum / Grid)	4,60,000	Sq.ft	Vitrified / Marble Flooring	3,20,000	Sq.ft
Cornice & Profile Lighting	18,500	Rmt	Epoxy & PU Industrial Flooring	85,000	Sq.ft
Texture & Decorative Finishes	62,000	Sq.ft	Civil & Masonry Works	2,10,000	Sq.ft
Wallpaper & Wall Panelling	48,000	Sq.ft	Waterproofing (Wet Areas)	42,000	Sq.ft
Modular Wardrobes & Kitchens	1,250	Nos	Doors & Hardware Fitting	3,400	Nos

*Presented item-wise for transparency • Verified records available on request*

12 • **ENGAGEMENT PROCESS**

# How we begin a project.



**TYPICAL ENGAGEMENT — INDICATIVE FIGURES**

**DISCOVERY → BOQ**  
5 – 10 days

**MATERIAL APPROVAL**  
7 – 14 days

**MOBILISATION**  
10 – 14 days

**EXECUTION WINDOW**  
Per project BOQ

**SNAG CLOSURE**  
Within 14 days

**DEFECT LIABILITY**  
12 months

*Typical project lead-time: Discovery to BOQ in 7 days • Mobilisation in 14 days • Weekly progress reviews throughout.*

13 • OUR COMMITMENTS

# What we promise — in writing.

Specific guarantees vary project-to-project and are documented inside the formal agreement. Below are the commitments we make to every client, on every site.

## 01 TRANSPARENT PRICING

Itemised BOQ with brand specs and unit rates. No hidden additions without a written change order signed by you.

## 02 ON-TIME DELIVERY DISCIPLINE

An agreed schedule with weekly milestones. Any slippage is communicated in advance, with a recovery plan.

## 03 QUALITY SIGN-OFF STAGES

Putty / primer / finish / hand-over — each stage signed off jointly before the next begins.

## 04 APPROVED MATERIALS ONLY

Materials sourced strictly from the brands and grades specified in the BOQ. Substitutions only with written approval.

## 05 SITE CONDUCT

PPE compliance, clean-site protocol, respect for neighbours, and verified workforce — every single day.

## 06 SNAG-LIST CLOSURE

Post hand-over snag-list closed within an agreed window. Project complete only when you say so.

### WARRANTY & AFTER-CARE

#### WORKMANSHIP

12 months from hand-over against defective workmanship.

#### MATERIAL

As per OEM warranty for paints, hardware and modular fittings.

#### SNAG WINDOW

Defects raised in first 14 days addressed at no charge.

#### ANNUAL VISIT

Optional first-year courtesy site visit to inspect finish.

14 • GET IN TOUCH



**SN INTERIORS**  
CRAFTED SPACES

Let's discuss your  
**next project.**

**REACH US**

**Phone**

+91 90226 90786 • +91 90226 95222

**Email**

s.n.interiors123@gmail.com

**WhatsApp**

+91 90226 90786

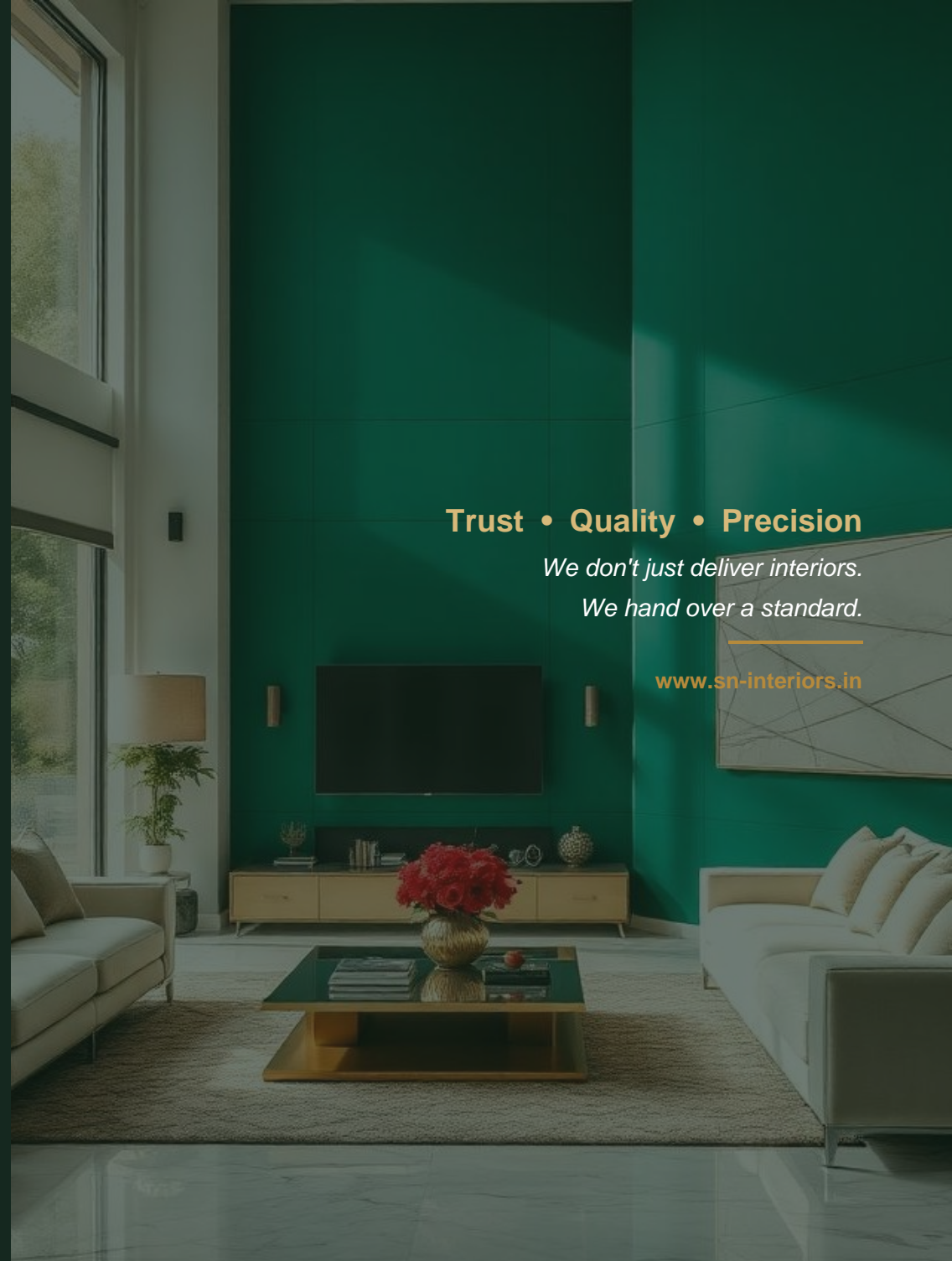
**VISIT US**

**Office Address**

101, 1st Floor, Wing D  
Galaxy Apartment, Behind Bunter Bhawan,  
Umarwadi Road, Kurla East,  
Mumbai, Maharashtra 400070

**WORKING HOURS**

Mon – Sat • 10:00 – 19:00 IST  
*Sundays / public holidays — by appointment.*



**Trust • Quality • Precision**

*We don't just deliver interiors.  
We hand over a standard.*

[www.sn-interiors.in](http://www.sn-interiors.in)